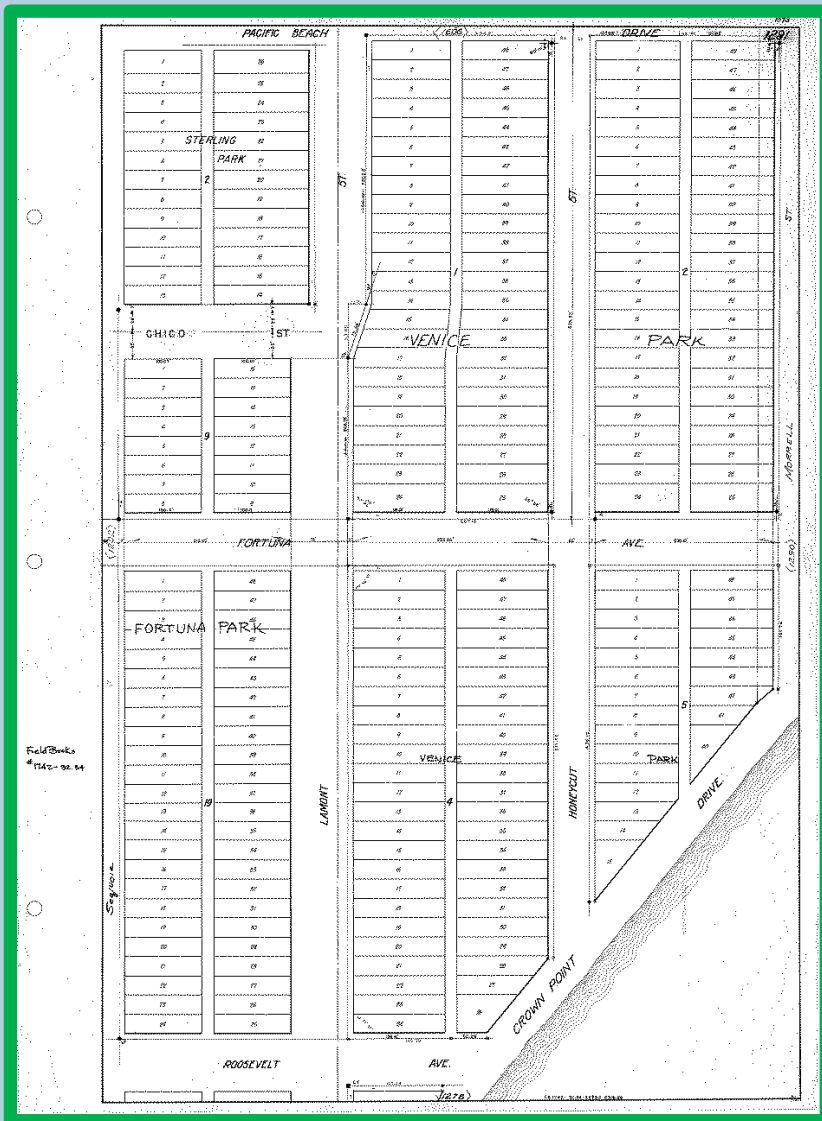


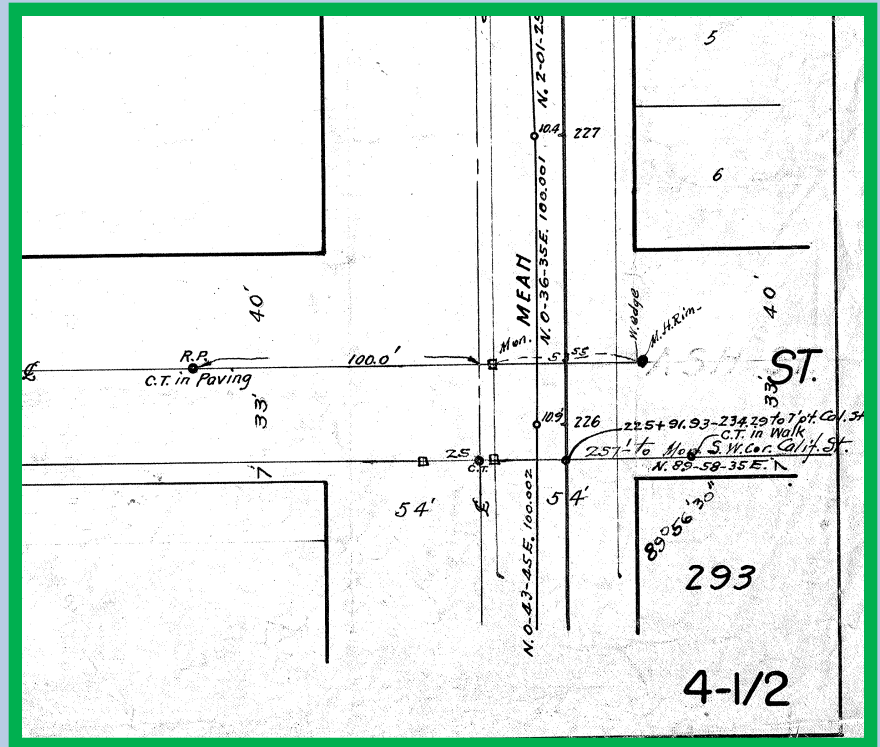
# CITY OF SAN DIEGO TIE POINT SHEETS NOW AVAILABLE ONLINE

Of all the unique documents on file with the city of San Diego, perhaps the most important are the city's "tie point sheets." These valuable surveying documents were developed over many years, principally through the 1930's as a WPA project. In the older sections of the city, they are the best available evidence as to the location of controlling monuments, most of which are composed of small lead plugs set in drill holes in the sidewalk, centered with a small brass or copper nail.



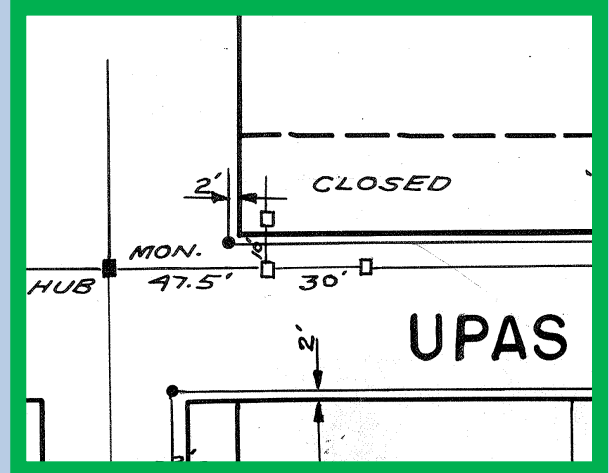
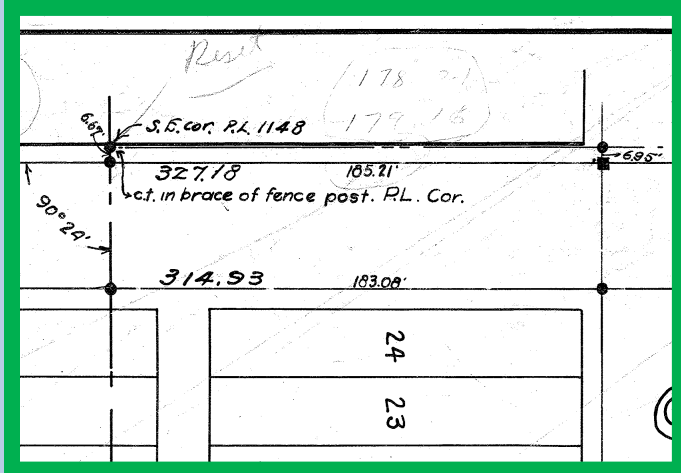
**CITY OF SAN  
DIEGO TIE POINT  
SHEET FOR A  
SECTION OF  
PACIFIC BEACH**

These monuments were typically set at a seven-foot offset to the right of way line while in some instances, they were set at odd locations. Without the tie point sheet, it is impossible to verify where the monument is located and more importantly, how to use it. A review of filed maps and surveys reveals this is one of the most common problems encountered and created when attempting to utilize a city offset monument.

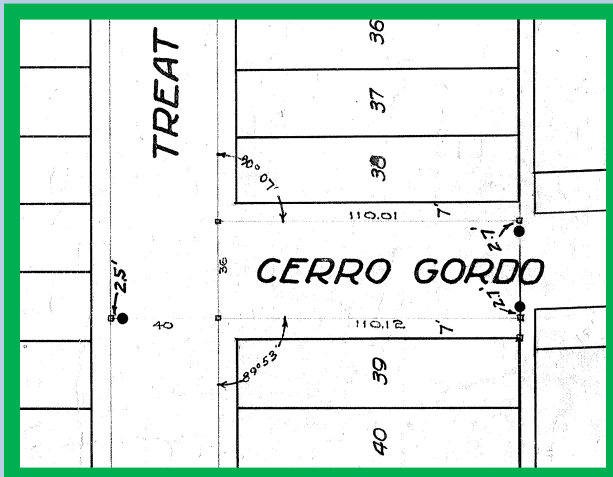


## DOWNTOWN SAN DIEGO – NOTICE THE COPPER TACK (C.T) SET IN THE PAVING AND THE OTHER IN THE SIDEWALK

In connection with contemporary development, city engineers installed contemporary standard “well” monuments be set in the general proximity of the center line intersection of public streets in the older sections of San Diego. Because these city blocks are each controlled by the original tie point monuments, typically set at seven-foot offsets to the block corners, the well monuments have mistakenly been used to reestablish block lines in direct contradiction to the controlling offset monuments. They are not at the centerline street intersections and they should never be used as such until they are verified. These older well monuments were set as construction control monuments and not to control the location of public rights of way. Accordingly, these monuments have been misused leading to boundary disputes and litigation. By utilizing the tie point sheets and subsequent amendments to these maps, the well monuments can be used to reestablish the controlling block corners as they are usually tied to the original block corner offsets.



## ODD OFFSETS ARE FOUND THROUGHOUT THE CITY

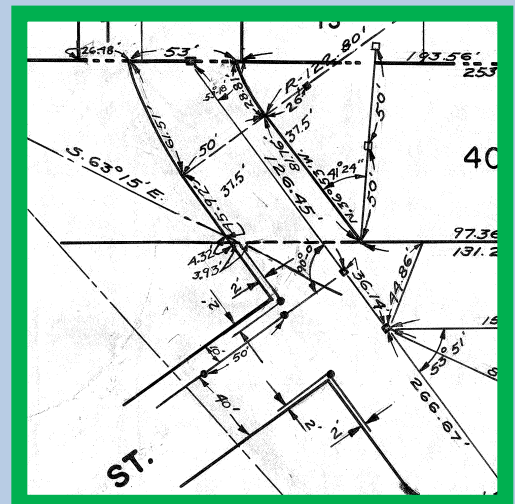


If you are working anywhere in the City of San Diego, you should strongly consider the tie point sheets as they typically depict the primary survey control for many sections of San Diego including La Jolla, Old Town, Ocean Beach, Mission Beach, Downtown San Diego, Normal Heights, North Park, South Park, East San Diego, and various tracts and subdivisions located along El Cajon Blvd. and University Avenue.

These sheets are now available at

[www.tiepoints.com](http://www.tiepoints.com) where they can be easily researched with [Google Earth](#) as a [Tiepoints kml file](#).

In order to locate a tie point sheet, simply query the address in Google and after the map zooms in, click the center of the red shape that surrounds the area and a tie point sheet number will appear. Simple email this number to [orders@tiepoints.com](mailto:orders@tiepoints.com) and we will send you a high resolution copy of this sheet. The Google Earth program can be accessed by clicking here:



## [TAKE ME TO THE CITY TIE POINTS ON GOOGLE EARTH](#)

[orders@tiepoints.com](mailto:orders@tiepoints.com)